

3 – Chief Executive’s Report – Annex B

Performance against service targets and caseloads

1. Table 1 below displays the new service targets introduced in November 2004 and amended in March 2006 and January 2008.

Table 1: Service Targets April and May 2009

Service Target	Area of work	Detail	March 2009	April 2009	May 2009	Average
Target 1	All	90% of Fitness to practise cases to be concluded within 15 months ¹	94% 249 of 266	91% 374 of 410	95% 351 of 371	93% 974 of 1047
Target 2 ²	Investigation	90% of Investigation process to be completed within 6 months ³	89% 388 of 438	86% 302 of 351	86% 309 of 360	87% 999 of 1149
Target 3 ⁴	Investigation	95% of Investigation process to be completed within 12 months ⁵	95% 328 of 345	99% 340 of 345	97% 311 of 322	97% 979 of 1012
Target 4	Adjudication	90% of panel hearings to commence within 9 months of referral ⁶	100% 25 of 25	85% 35 of 41	97% 28 of 29	93% 88 of 95
Target 5	Interim Orders Panel	100% of doctors referred to IOP to be heard within 1 month	100% 36 of 36	100% 36 of 36	100% 24 of 24	100% 96 of 96
Target 6	Case Review	100% of doctors with Conditions or Undertakings to be reviewed (by Panel, Case Examiner or Registrar) before being returned to unrestricted practice	100% 9 of 9	100% 10 of 10	100% 9 of 9	100% 28 of 28
Target 7	Investigation Committee	100% of Doctors referred to IC to be heard by IC within 2 months	100% 6 of 6	100% 2 of 2	100% 5 of 5	100% 13 of 13

1 The overall 15-month target excludes from consideration cases that are criminal convictions, statutory inquiries, determinations and restoration applications.

2 The 6-month investigation target includes the 3-month target for Health Assessments and 6-month target for Performance Assessments and the 2-month target for cases that are considered by the Investigation Committee.

3 The investigation 6-month target excludes from consideration cases that are criminal convictions, statutory inquiries, determinations and restoration applications.

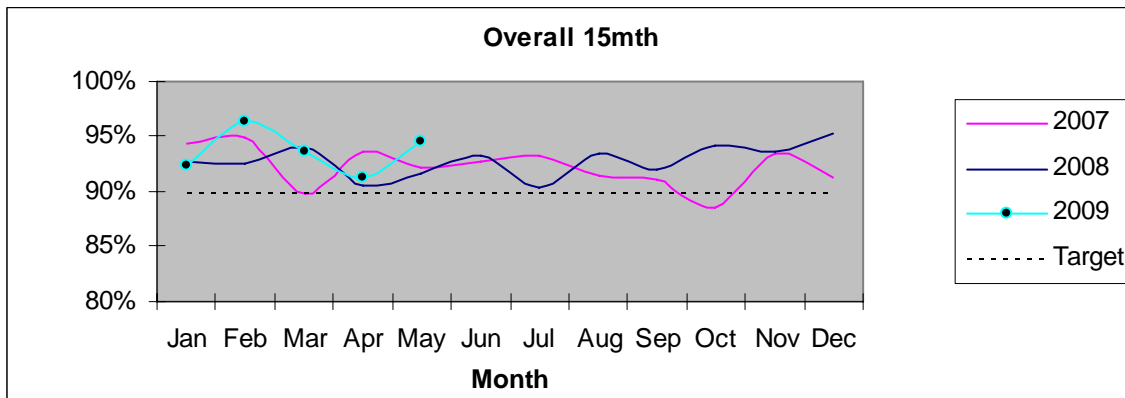
4 The 12-month investigation target includes the 3-month target for Health Assessments and 6-month target for Performance Assessments and the 2-month target for cases that are considered by the Investigation Committee.

5 The investigation 12-month target excludes from consideration cases that are criminal convictions, statutory inquiries, determinations and restoration applications.

6 This target includes cases that have concluded prior to a FTP Panel hearing within 9 months of referral from Investigation (i.e. referral cancellations, voluntary erasures etc)

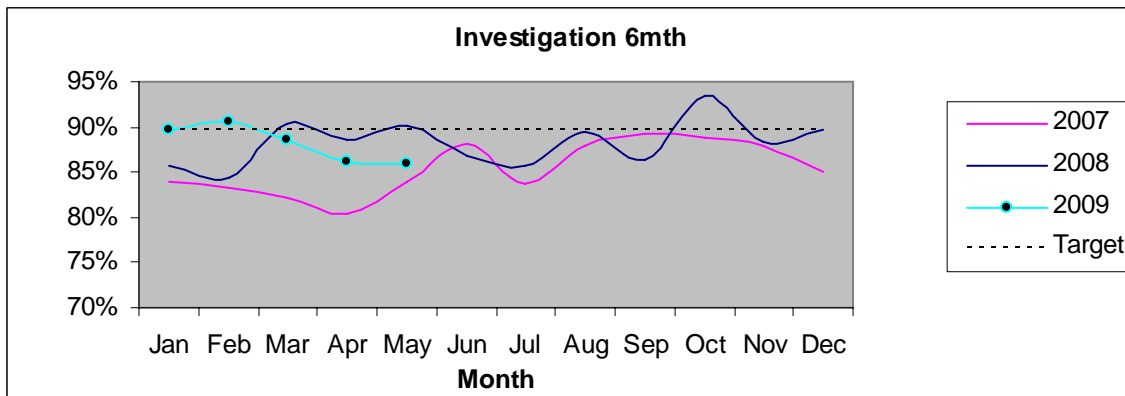
2. Figure 1 shows performance against the overall 15 month target (target 1 above) at the end of May 2009.

Figure 1:



3. Figure 2 shows performance against the six month investigation target (target 2 above) at the end of May 2009.

Figure 2:



4. Table 2 shows open caseloads at the end of May 2009, compared with May 2008.

Table 2:

Type	End of May 2008	End of May 2009
Stream 1	1206	1196
Stream 2	457	268
Case Presentation Team	378	439
Case Review Team	442	507